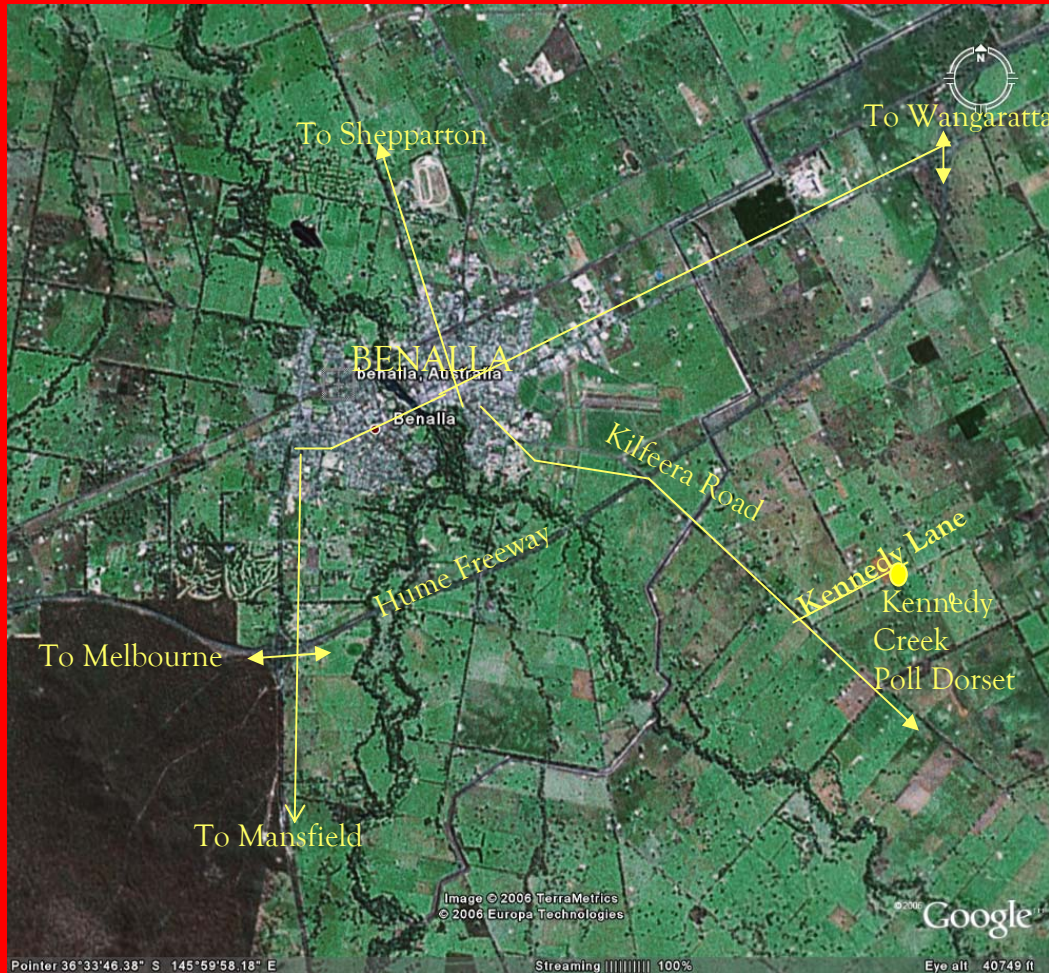


Kennedy Creek Poll Dorset Stud

www.polldorset.org.au/kennedycreek

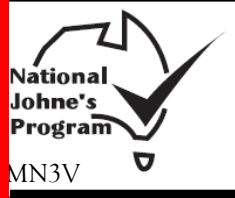
How to get to Kennedy Creek Poll Dorset Stud

From the main street in Benalla (Bridge Street) turn south east onto Coster St (this becomes Kilfeera Road) - this intersection is a roundabout and has KFC, McDonalds, a motel and a Safeway petrol outlet on its corners. As you leave town on Kilfeera Road you go past the hospital and then the aerodrome on your left. Continue over the freeway over pass, and go past the first left turn (Hilbricks Road). Take your next left (Kennedys Lane) and we are the first house on the right (about 1.5 kilometres from the turn-off).



Kennedy Creek Poll Dorset Stud

www.polldorset.org.au/kennedycreek



Owner: Dick Barber (Phone: 03 57 621362)

Location: 170 Kennedy Lane, Benalla, 3672

(8 kilometers from Benalla – see map p. 4)

Email: kennedycreek@polldorset.org.au

Alternative contact: Stuart (0417538297)

Our Aim:

“To produce flock rams with low disease risk, servicing the needs of commercial prime lamb producers for measured production of rapid growing, easy care, well muscled prime lambs.”

FLOCK DETAILS

- Lambplan (ASBV) flock, since 1992
 - measuring birthweight, weaning weight, post weaning weight, post weaning fat, post weaning eye muscle and adult weight
- JD MN3V
- Brucellosis accredited free (#4)
- Footrot free
- lice free

Ovine Brucellosis Free Cert 4.

Kennedy Creek Poll Dorset Stud

What's happened in 2009?

- Our Lambplan results continue to improve (last year average Post Weaning Weight of 11.6 kg and this years sale ram average of 12.3). We have weighed all lambs at birth in the last two years to improve birthweight ASBV accuracy (these will probably change in the next month as this years data goes into the calculation). Each ram is weighed at birth, weaning, post weaning and as at 12-15 months to give high accuracy growth figures.
- Flock rams for sale this year primarily sired from Derrynock, Kennedy Creek, Kentish Downs and Wyndamah blood lines. Details of two of these sires (440/2007 & Kentish Downs 378/2005) on the next page—semen available from both these sires. Some very impressive rams available from all sires with Cplus over 190 and Trade Index over 112.
- We have rams to suit all types of lamb production, including crossing with Merinos or First cross ewes.
- Despite the tough season the flock rams have done well with sale rams weighing between 70-(spring drop) and 110 kilograms (autumn drop) in mid September. Individual ram weight and scrotal circumference will be available by sale date.
- Our JD status is MN3V. All rams this year were vaccinated last year as lambs, thus are vaccinated progeny of vaccinated ewes. We maintain a restriction on what sheep are brought onto the property. All rams continue to be brucellosis free, footrot free, rams are treated with 6 in 1 and Zapp in August (though we have not had lice for over twenty years).
- All of our Lambplan data is available to you online— if you want to check this out go to: www.sheepgenetics.org.au/lambplan

Then click on *search > terminals >* and put *kennedy creek* in the “stud name” section and 2008 in the year and sex = male. You can then search all ram details (please note not all rams will be available for sale as some will be culled and some will be retained as stud animals). A full list of these rams is also available on the website (click on ram number for transfer to current SGA figures on the SGA website).

- **Rams are available for sale from October 19th** and as usual most rams will be sold on property by private sale. Give us a call to discuss your ram needs for this year. We have 125 rams available this year which is twenty less than last year so they may sell out earlier than last year.

Kennedy Creek Poll Dorset Stud

Kennedy Creek 440/2007

A very long ram with more muscle than figures suggest. He is out of a very high growth sire (Derrynock 128/2004) and a high performing ewe. He has been selected for assessment in the Sheep CRC nucleus flock for the 2009 lambing (results this Spring).

Photo taken October 2009.



Lambplan figures

BWT	0.52	0.34
WWT	11.9	10.2
PWWT	16.2	14.9
PFAT	-1.3	-0.3
PEMD	0.7	2.4
Cplus	205	198

Kentish Downs 378/2005

Purchased for his solid, well muscled build this ram has continued to surpass our expectations for growth. Currently one of the highest ranked Trade \$\$\$ index sires in Australia and used in a number of studs via AI in 2008/09. Some excellent sons in this years catalogue. Produces fantastic daughters.

Photo at 18 months.



Our rams continue to be above the average terminal sire ram in weight gain. This puts more money in your pocket.

Flock	WWT	PWT	PFAT	PEMD	Cplus
Kennedy Creek 2008 drop sale rams	8.4	12.3	-0.7	0.9	179
All terminal sires 2008	6.5	10.0	-0.6	0.8	164

A big thank-you to all of our clients for your support in 2008/09 during what have again been very trying climatic conditions. We hope you have time to come and visit us this year, as we believe the quality of our rams has improved considerably over the past three years. We hope that some of you have been able to achieve some of the high lamb prices on offer recently and that seasonal conditions improve. We look forward to seeing you soon.

The Barber Family

